

TAKE THE PLUNGE!

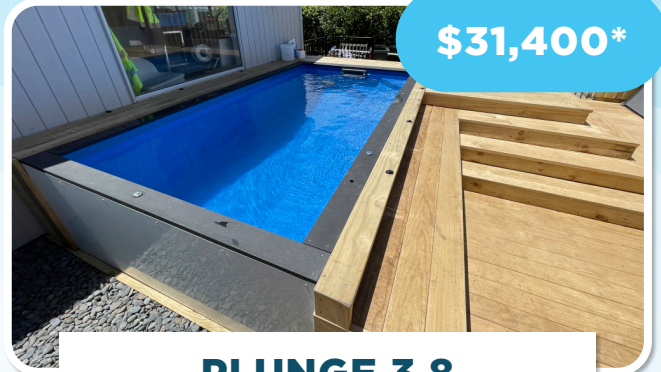
Standard Above-Ground Pool Pricing

\$28,627*



PLUNGE 2.8

\$31,400*



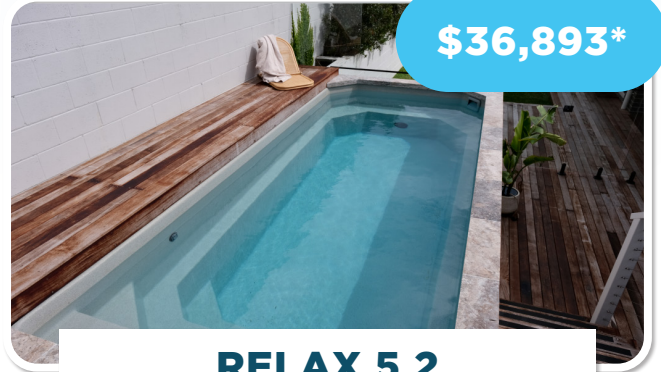
PLUNGE 3.8

\$34,893*



RELAX 4.0

\$36,893*



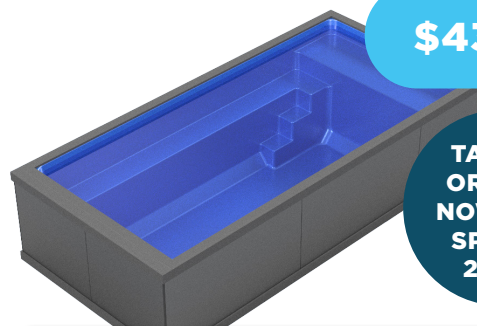
RELAX 5.2

\$39,560*



RELAX 6.3 with beach

\$43,524



PLAY 6.1

TAKING
ORDERS
NOW FOR
SPRING
2024!

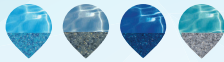
*Standard package includes a pump, skimmer filter, chlorinator, LED light, skimmer box and basic pool maintenance kit (Pre-plumbed and ready for installation). Excludes cladding & coping boards, additional equipment options, permits, delivery, crane and installation. Prices are subject to change without notice.

THE LITTLE POOL CO.

INSTANT POOLS • TIMELESS STYLE

WHY CHOOSE A LITTLE POOL?

FOUR POPULAR COLORS TO CHOOSE FROM



EXTERIOR FINISH OPTIONS

Fully or partially finish the exterior of your pool with decking and aluminum composite panels.

ENCLOSED EQUIPMENT

For easy access, our equipment can be placed under the pool - underneath the entry stair or within the frame extension on the skimmer end.

MINIMAL SITE PREPARATION

Our pools have been specifically engineered to suit almost every site with very little ground work required. All you need is a 6 inch thick steel re-enforced concrete base pad.

HIGH QUALITY FIBERGLASS INTERIOR

Unlike traditional above ground pools, The Little Pool Co. pools are designed to last a lifetime. No need to replace or reline the interior surface, just keep your water balanced (no concrete to maintain and no liners to replace).

LIGHT-WEIGHT AND CHEAPER TO TRANSPORT/DELIVER

AUSTRALIAN FIBERGLASS TECHNOLOGY

Made by world-renowned fiberglass pool manufacturer Compass Pools Australia and assembled in the U.S.A.

COMPOSITE EXOSKELETON

Our FRP (Fiberglass Reinforced Polymer) framework surrounding the shell creates a Free-Standing Fiberglass pool, allowing for simple on-site installations. No Wood, steel or concrete is used in the structure of the pool so there is no need to worry about rot, rust, termites, weight, or warping.

CAN BE INSTALLED UP TO 2FT INGROUND

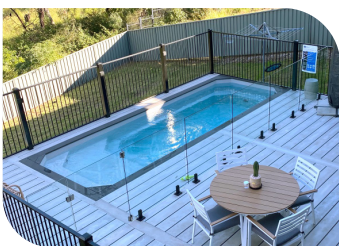
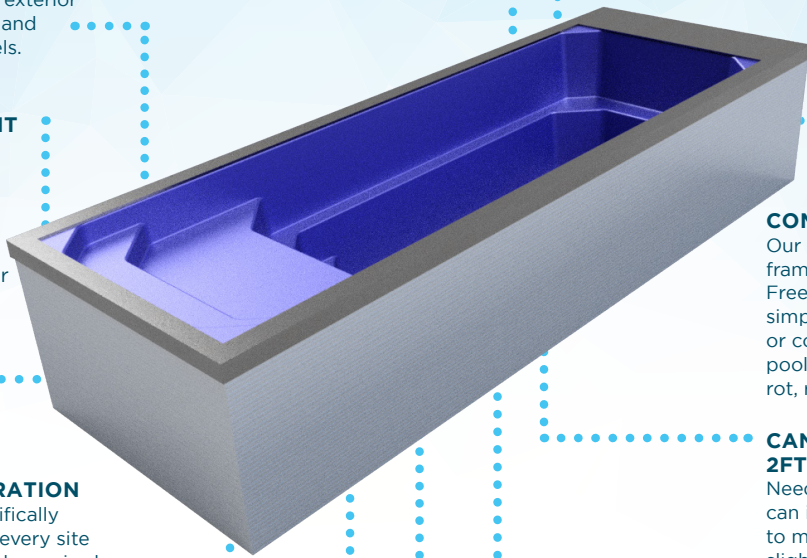
Need your pool to sit a little lower? You can install your pool partially inground to match existing deck, patio or other slightly raised areas. Just make sure you have prepared your concrete base.

PLUG AND PLAY

Your pool arrives pre-plumbed with required pump, filter and equipment, and is ready to fill and use. All you need to do is arrange a power connection.

SWIM ON THE DAY YOUR POOL ARRIVES!

Provided your concrete base has been established prior to delivery, your Little Pool Co. pool can be ready to swim in the day it arrives.



*TIMBER SURROUNDS MAY VARY FROM PICTURED.